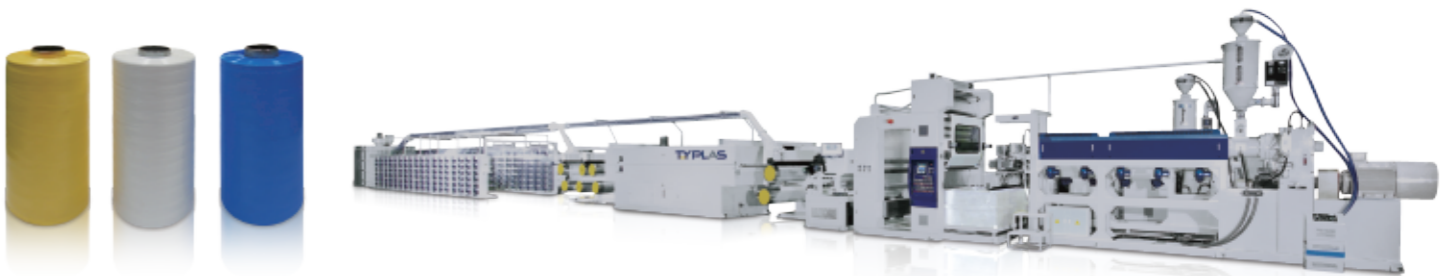
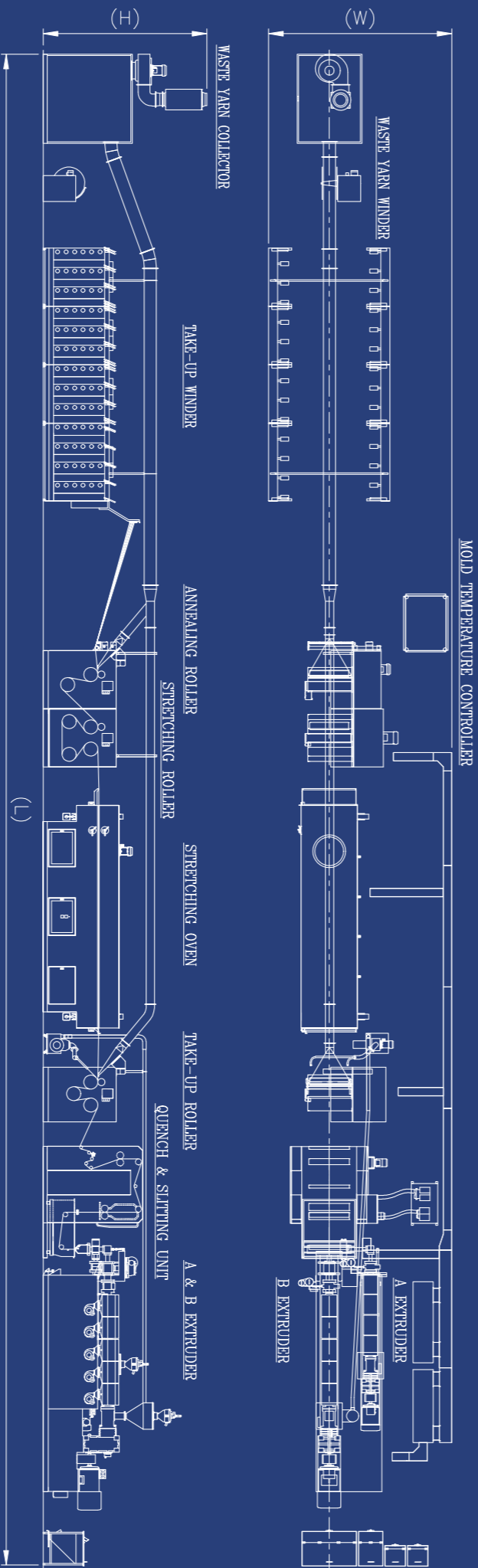


TYPLAS

TYPLAS's TLTM Series - three layers of extrusion tape line. Materials throughout flow to A & B extruder through the feedblock device for combining three layers as ABA design. Reducing the cost of raw materials and increasing physical strength are its main feature.



Three Layer PP Tape Line Making Machine / TLTM Series  
EXTRUSION TAPE LINE



SPECIFICATION

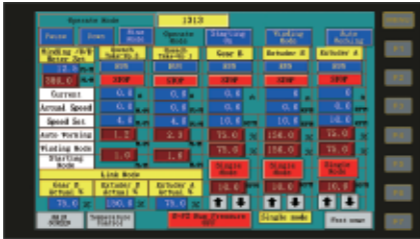
ITEM / MODEL	TY-TLTM75-95-110-1100-180ST1	TY-TLTM80-105-110-1300-216ST1	TY-TLTM90-115-110-1500-252ST1
Max. Capacity	420 kg / hr	520 kg / hr	620 kg / hr
Max. Line Speed	380 m / min	380 m / min	380 m / min
Denier	600 - 1200	600 - 1200	600 - 1200
Screw Diameter / Multiple	A Extruder: 75 mm / 33D B Extruder: 95 mm / 33D	A Extruder: 80 mm / 33D B Extruder: 105 mm / 33D	A Extruder: 90 mm / 33D B Extruder: 115 mm / 33D
T-die Width	1100 mm	1300 mm	1530 mm
Effective Width	980 mm	1190 mm	1400 mm
Auto Tension Take-up Winder	180 pcs	216 pcs	252 pcs
L x W x H	39000 mm x 4700 mm x 4050 mm	41000 mm x 4900 mm x 4150 mm	43000 mm x 5100 mm x 4250 mm

**Terng Yih Machinery Co., Ltd.**  
No. 48, Gongming S. 1st Rd., An-nan Dist.,  
Tainan City, Taiwan 709  
T +886-6-245-1166 F +886-6-245-1133  
[www.typlas-tw.com](http://www.typlas-tw.com)  
E [terngyih103@gmail.com](mailto:terngyih103@gmail.com) / [tw2451166@gmail.com](mailto:tw2451166@gmail.com)





Inverter type and automatic tension control winder, the light-weight design of the tape guide slide achieves power saving performance, and the winding shaft is equipped with a hooking device to facilitate the roll change.



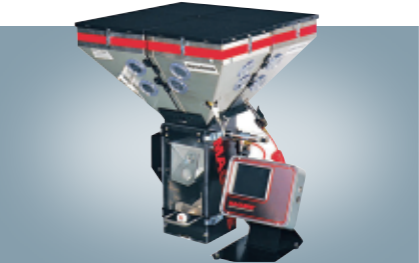
PLC program control & HMI interface, easy to operate and data memorize.



Melt pump (optional), its function is to maintain the quality and stability of the extrusion.



Double-layer automatic network switching device, can choose plastic pressure control network change and timing control network change.



MAGUIRE blender, and its function is to automatically cut and mix according to the proportion of raw materials.



The double extrusion goes through the feed block device and the special T-die runner to make the three-layer A.B.A co-extrusion.

FEATURE & ADVANTAGES

TYPLAS's TLTM series is mainly used in PP, HDPE tape line production, it used for weaving by circular loom and flat loom into tubular woven bags, onion bags, FIBC fabrics, tents, and waterproof tarpaulin.

- The A layer of ABA three layer can add 3% modifier. This will help the film to dehydrate efficiently and at the same time maintain high durability during stretching proceed. Not only does this keep the high tension of tape, but also does the surface of tape keep its brightness.
- Max. line speed: 380 m/min
- Max. capacity: 620 kg/hr
- PLC programing and human machine interface with interlocking operation.
- Tape winder can set the diameter value of tape for winder change warning by LED light.
- Three layer co-extrusion Improve the physical property of tape to the highest tensile strength and tension.

TLTM OPTIONAL EQUIPMENT



MEC-P-150 Thickness measuring machine, the use of Germany imported infrared MF electric eye, measurement accuracy of  $\pm 5\mu\text{m}$ , no radiation problems.

EXTRUSION TAPE LINE	STANDARD	OPTIONAL
Nano-infrared Industry Heater	●	●
Auto Control Water Cooling System	●	●
Thickness Measurement System	●	●
Inverter Control of Stretching Oven	●	●
Inverter Control of Waste Yarn Collector	●	●
Screw Type Air Compressor	●	●
Special Hdpe Equipment	●	●