

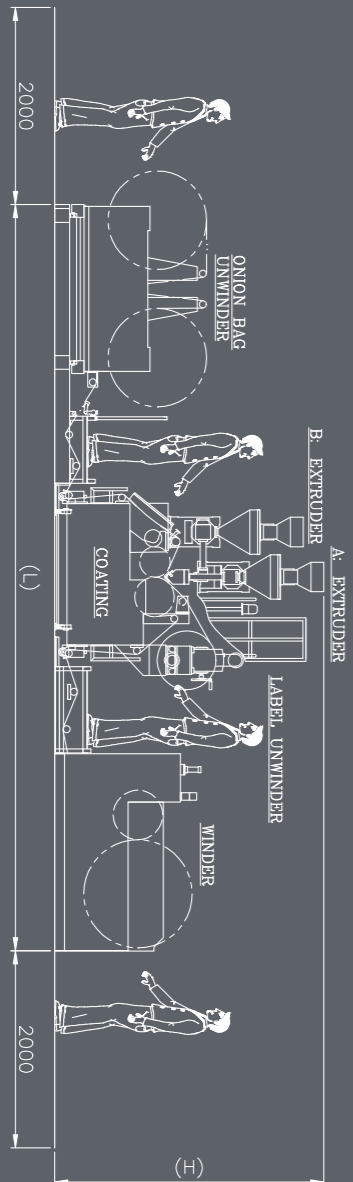
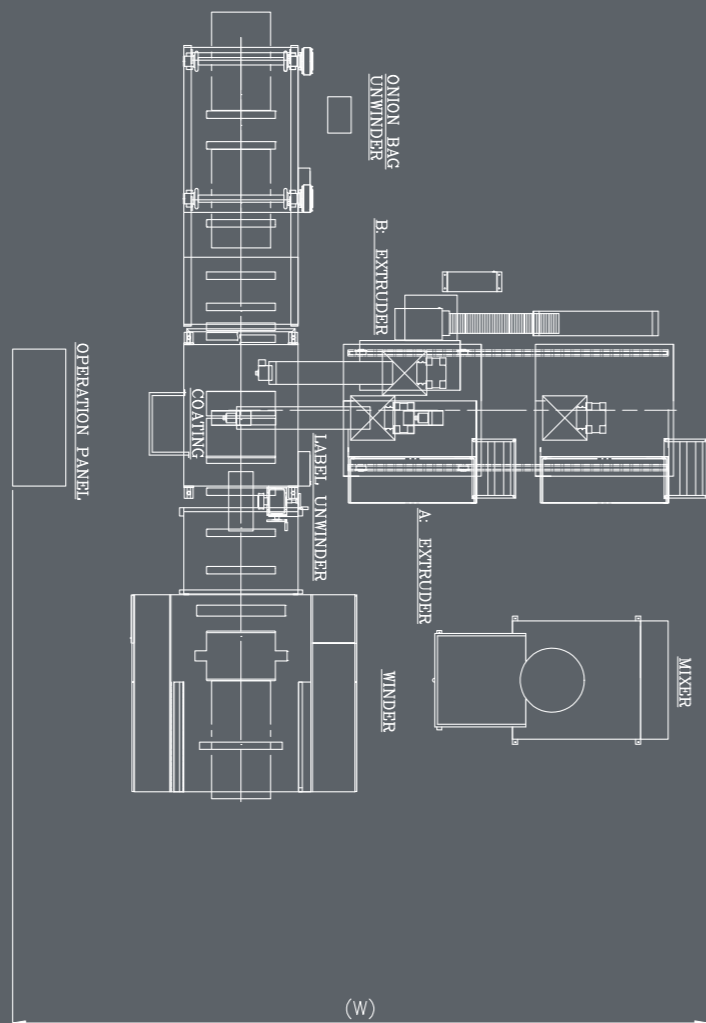


TYPLAS's LMLB series is an extrusion laminating machine. This model is used for lamination between PP mesh cloth and printing leno, and that design produces bonding effect. Automatic operation control is the main feature.



**SPECIFICATION**

ITEM / MODEL	TY-LMLB45-45-11SW	TY-LMLB55-55-11SW
Two Extruder Max. Capacity	45 kg / hr & 45 kg / hr	70 kg / hr & 70 kg / hr
Max. Line Speed	100 m / min	150 m / min
Coating Thickness	0.025 mm - 0.08 mm	0.025 mm - 0.08 mm
Screw Diameter/Multiple	45 mm / 32D & 45 mm / 32D	55 mm / 32D & 55 mm / 32D
T-die Width	420 mm & 270 mm	420 mm & 270 mm
Label Coating Width	110 mm - 260 mm	110 mm - 260 mm
Side Film Coating Width	70 mm - 100 mm	70 mm - 100 mm
L x W x H	7600 mm x 7000 mm x 2800 mm	7700 mm x 7800 mm x 2900 mm



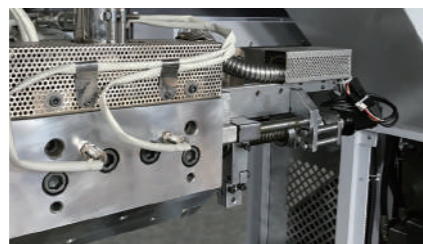
**Onion Leno Bag Laminating Machine / LMLB Series**  
LAMINATING MACHINE

**Terng Yih Machinery Co., Ltd.**  
No. 48, Gongming S. 1st Rd., An-nan Dist.,  
Tainan City, Taiwan 709  
T + 886-6-245-1166 F + 886-6-245-1133  
www.typlas-tw.com  
E terngyih103@gmail.com / terngyih23@gmail.com





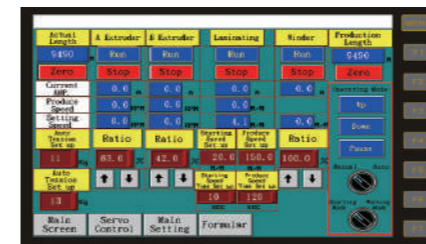
Dual extruder and dual T-die design make the operation and adjustment of film position and width more easier.



T-die servo motor automatically adjust the film, it can maintain a certain width of the film during speed acceleration or deceleration.



Unwinder configured with missing cloth detection and automatic unwinding change device, it makes the operation more convenient.



PLC programming and human machine interface with interlocking operation and operating data memorize.



Simple film flow design and dual extrusion achieve high efficiency and energy saving.



Winder configured design of auto roller changed and auto tension control to be effectively adjusted and maintain the smoothness of the cloth roll.

### FEATURE & ADVANTAGES

The main functions of the LMLB series can be made of two kinds of film at the same time. First is onion mesh cloth and printing leno through the lamination for bonding in the middle. Second is to laminate the film about 70-100 mm wide at the side, and this side film will do hole-punching process and used as auto filling and packing.

- Max. Line speed: 150 m/min
- Special screw design to produce high quality and stable extrusion.
- PLC programming and human machine interface with interlocking operation and auto roller change.
- Under the control of servo motor, the positioning of the film and the width of the film can achieve a certain degree of accuracy.
- The unwinder and winder through the automatic tension control system, which can keep the smoothness of the mesh cloth.
- Machine customization.



Vertical Type Available

### LMLB OPTIONAL EQUIPMENT

EXTRUSION TAPE LINE	STANDARD	OPTIONAL
Vertical Mixer	●	●
Auto Roll Exchange Device for Unwinder	●	●
Label Edge Position Controller	●	●
Water Cooling System	●	●
Air Compressor	●	●
Electric Chain Hoist Device	●	●