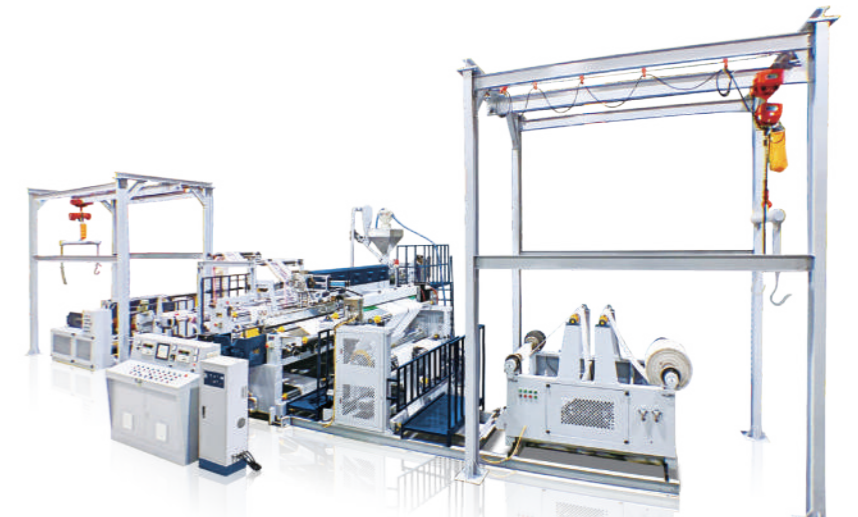




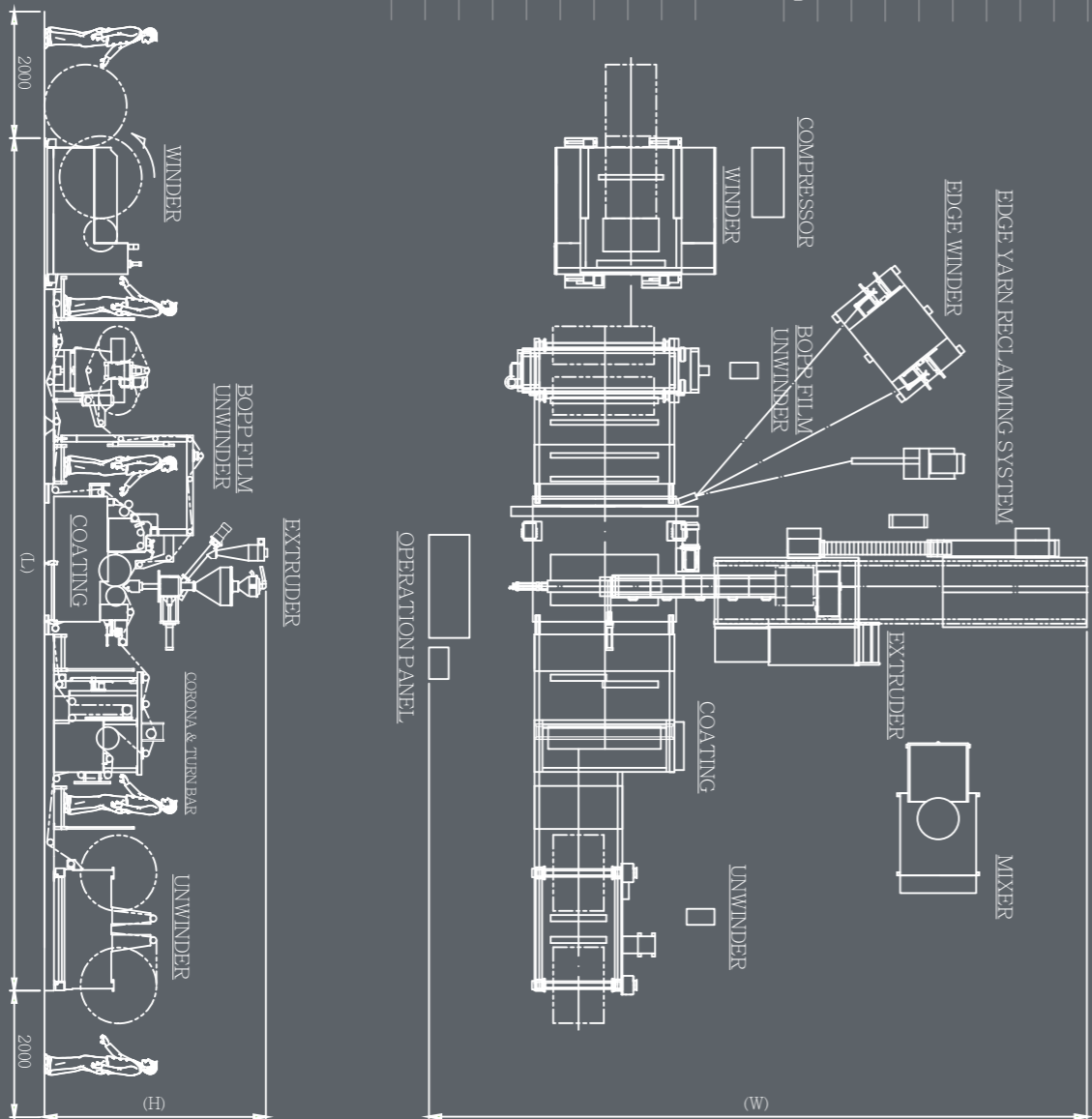
LMBO series is an extrusion laminating machine. This model is used for lamination between PP woven cloth and BOPP printing film, and that design produces bonding effect. Automatic operation control is the main feature.



PP Tubular Woven Bag and BOPP Laminating Machine / LMBO Series  
EXTRUSION LAMINATING

**SPECIFICATION**

ITEM / MODEL	TY-LMBO90-16-08SSWD	TY-LMBO95-18-09SSWD
Extruder Max. Capacity	200 kg / hr	240 kg / hr
Max. line Speed	100 m / min	100 m / min
Coating Thickness	0.018 mm - 0.05 mm	0.018 mm - 0.05 mm
Screw Diameter / Multiple	90 mm / 32D	95 mm / 32D
T-die Width	1650 mm	1850 mm
Coating Width	350 mm - 680mm	350 mm - 780 mm
PP Tubular Coll Weight	60 - 100 gsm / m <sup>2</sup>	60 - 100 gsm / m <sup>2</sup>
L x W x H	13000mm x 11000mm x 3600mm	13000mm x 11500mm x 3700mm
ITEM / MODEL	TY-LMBO110-18-09SSWD	TY-LMBO115-18-09SSWD
Extruder Max. Capacity	360 kg / hr	420 kg / hr
Max. line Speed	180 m / min	180 m / min
Coating Thickness	0.018 mm - 0.05 mm	0.018 mm - 0.05 mm
Screw Diameter / Multiple	110 mm / 32D	115 mm / 32D
T-die Width	1650 mm	1850 mm
Coating Width	350 mm - 680 mm	350 mm - 780 mm
PP Tubular Coll Weight	60 - 100 gsm / m <sup>2</sup>	60 - 100 gsm / m <sup>2</sup>
L x W x H	14000mm x 12200mm x 3900mm	14000mm x 12800mm x 4000mm



**Terry Yih Machinery Co., Ltd.**  
 No. 48, Congming S. 1st Rd., An-nan Dist.,  
 Tainan City, Taiwan 709  
 T +886-6-245-1166 F +886-6-245-1133  
 www.typlas-tw.com  
 E terryyih103@gmail.com / terryyih23@gmail.com



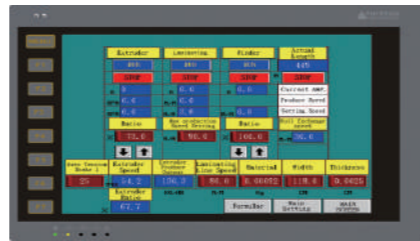




The unwinder of BOPP sandwich laminating machine, and the take up motion of unwinder can range into two types which are speed decrease or not decrease.



EPC automatic edge cutter device, color film can effectively align and adjust the trim size.



PLC programming and human machine interface with interlocking operation and operating data memorize.



Teflon tape device with belt type, two side or unilateral adjustments.



PP Surface treatment corona and PP woven bag turn bar device.



The unwinder is equipped with cloth roll missing cloth detection and automatic roll change design, make operations more convenient.

## FEATURE & ADVANTAGES

The main function of the LMBO series is to make two types of lamination. First is PP tubular woven cloth double side lamination. PP Tubular woven cloth goes through turn bar device, then the two side is completed laminated at the same time. Second is lamination by double side of PP tubular woven cloth and BOPP printing film, and the main feature is that the two sides of the printing point can reach automatic peering.

- Production speed is divided into 100 m/min and 180 m/min models.
- Special screw design to produce high quality and stable discharge.
- PLC programming and human machine interface makes more convenient to set the film thickness, speed synchronous control, and automatic roll change.
- Unwinder is equipped with automatic cloth connect, and the winder can be used for meter set automatic cloth change function.
- The unwinder and winder through the automatic tension control system, which can keep the smoothness of cloth.
- Machine customization.



MAGUIRE blender(optional), and its function is to automatically cut and mix according to the proportion of raw materials.

## LMBO OPTIONAL EQUIPMENT

EXTRUSION TAPE LINE	STANDARD	OPTIONAL
Vertical Mixer	●	●
Maguire Gravimetric Batch Blender	●	●
Special Surface Chiller Roller	●	●
Cloth Not Deceleration Type for BOPP Film Unwinder	●	●
Cloth Deceleration Type for BOPP Film Unwinder	●	●
Water Cooling System	●	●
Air Compressor	●	●
Electric Chain Hoist Device	●	●